

Partnership Suite Ballot Tickets Top Tips

Finding your favourite acts on partnerchoice.co.uk



1

In the top left of your screen, click

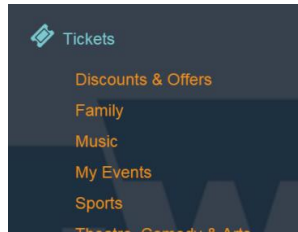
I want to see... ▾

or



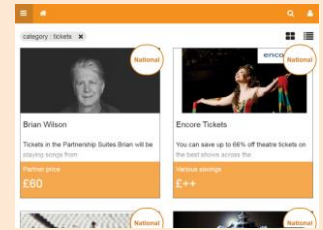
2

In the menu that appears, click 'Tickets'



3

Scroll to find a great act, and click anywhere in the box



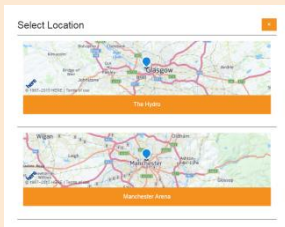
Applying to enter a ballot



1

Select your chosen location

Select Location



or

The O2

a single venue shows automatically



2

Select your chosen date

Select Date



or

Sunday 25th October 2015

a single date shows automatically



3

Prices will appear automatically

Brian Wilson		
£60.00	£60.00	£84.00
Partner price	Spouse/Dependent price	Guest price



Click 'Apply Now'

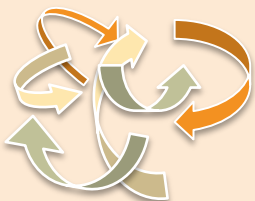
Apply Now

What happens after you have applied?



1

Winners are selected at random by a computer programme



2

Winners receive an email with a link to payment



Remember to check your email regularly – including your junk mail



You will have 10 days to pay. If you don't pay in this time, you will lose your tickets and they will be offered to another Partner



3

You can check your ballot status at the top right corner of the screen by clicking...

Joe_bloggs@email.co.uk

or



then click...



awaiting ballot

The ballot hasn't run, or it has and you may yet get tickets if other partners fail to pay

expired

Payment not made in time – you have lost your tickets

purchased

Your tickets are paid for

ended

You have not won tickets

won

Awaiting your payment

your ballot status

Paying for your tickets



1

Enter the number of tickets needed..

accept Ts&Cs and click 'Checkout'

I have read and understand the [terms & conditions](#)

Cancel Checkout



2

Enter your address and card details..

use the arrow buttons to move down to the next section..

Delivery Address

until each section has a tick..



3

Click

Confirm & Pay

The tick confirms your payment has gone through



How you will receive your tickets



Collect your tickets on the day from the **'Corporate Ticket Collections'** box office, at the main entrance to the Arena.

Collect the tickets yourself and present your Partner discount card.

The Terms and Conditions you agreed to stated how you would receive your tickets, but here's a reminder



Tickets will be **emailed** to you 7-10 days before the event date from the Hydro.

Print off your e-tickets and take them to the event, along with your Partner discount card.

The **O₂** arena



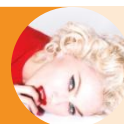
Tickets will **emailed** to you 7-10 days before the event date from **AXS Guest Services**.

Print off your e-tickets and take them to the event, along with your Partner discount card.



Remember to check your email regularly – including your junk mail

Find out more



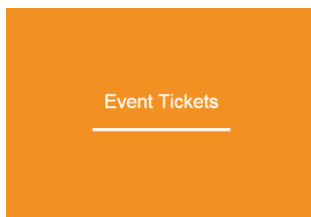
1

In the bottom left of your screen, click



2

Then click 'Event Tickets'



3

Click the orange text to see each topic

